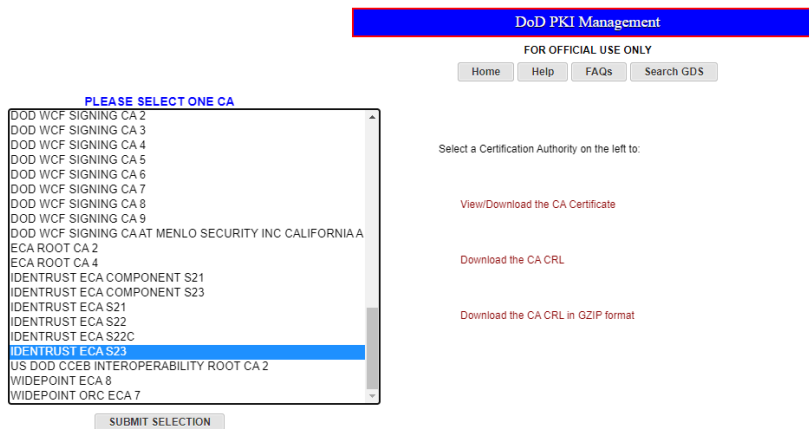


# How to Install a Root Chain for Use with DoD ECA Digital Certificates Using Microsoft® Edge

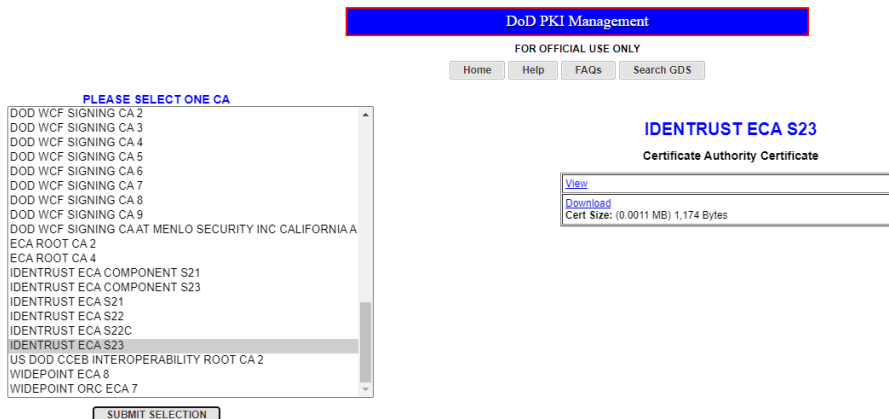
Before you can use your IdenTrust ECA digital Certificates, the IdenTrust ECA Subordinate and ECA Root Certificate must be installed in your browser. This process is performed automatically during the retrieval of the certificate. These instructions are provided only in the case that such process does not execute properly or that you need to install the ECA root chain on another computer.

## Download the IdenTrust ECA Subordinate Certificate

1. Access the Defense Information Systems Agency (DISA) website where ECA Subordinate certificates are available: <https://crl.gds.disa.mil/>
2. Determine which IdenTrust ECA Subordinate certificate you need to use with your ECA certificate:
  - For ECA certificates installed **on or after** May 28, 2019 **until** April 30, 2022, select IdenTrust ECA S22
  - For ECA certificates installed **after** April 30, 2022, select IdenTrust ECA S23
3. Select the IdenTrust ECA certificate you wish to install and click **“Submit Selection”**.



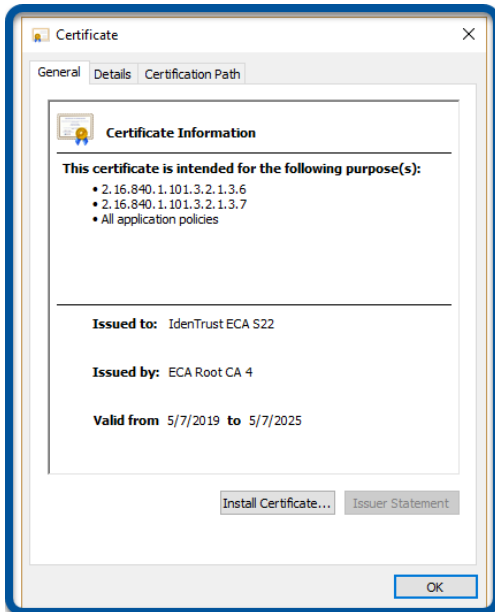
4. Launch the subordinate CA certificate download by selecting **“Download”**.



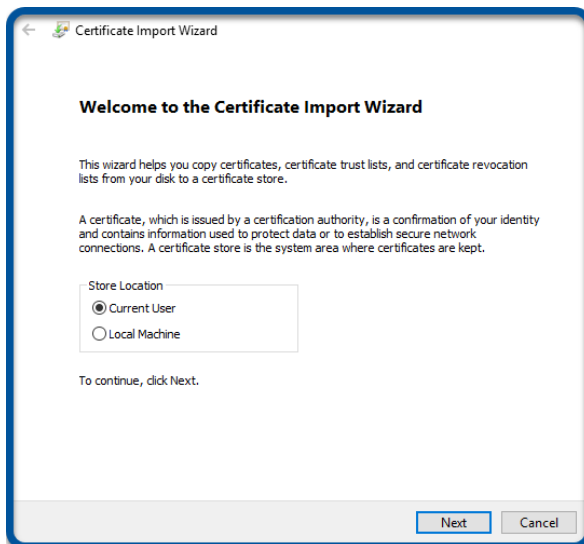
5. Open the downloaded certificate file. A **Certificate** window will open.

## Install the Certificate

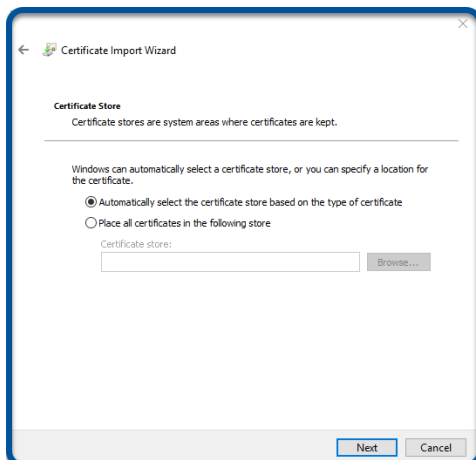
1. Select **“Install Certificate”**. This will launch the **Certificate Import Wizard**.



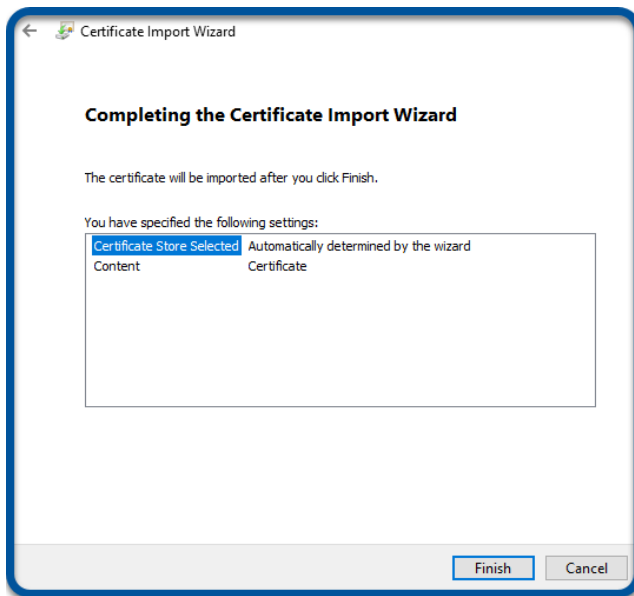
2. Select **“Next”** to start the import wizard.



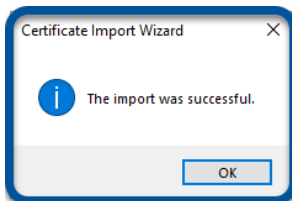
3. Use the default selection for the certificate store and click **“Next”**.



- Click **“Finish”** to complete the subordinate CA certificate import.



- Receive confirmation that the import was successful and click **“OK”** to close the confirmation window.



- Click **“OK”** to close the certificate window.

